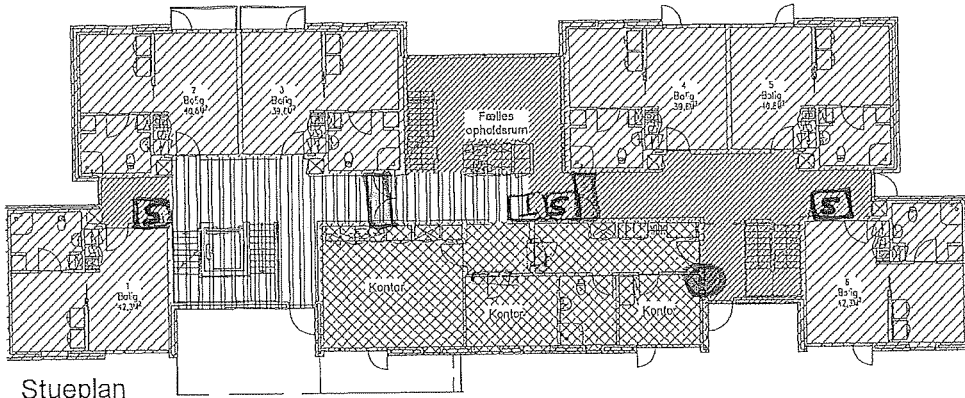
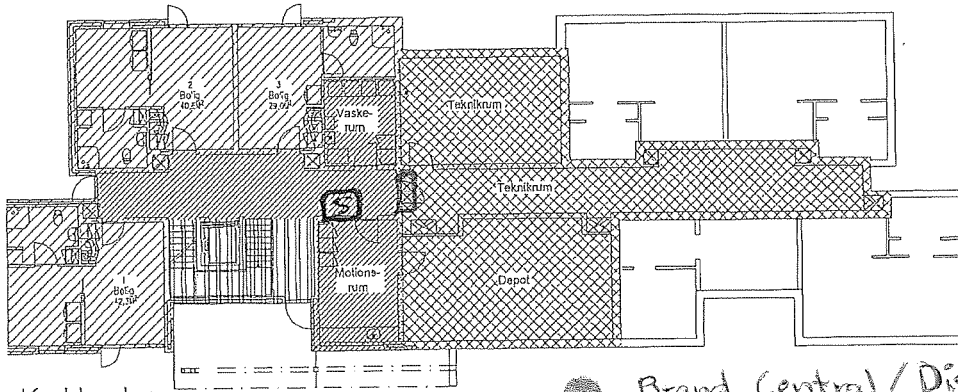


1. salsplan











Stueplan



Kælderplan

SIGNATURFORKLARING

-  Bolig areal (100% beboeren) 694,4 m²
-  Fælles boligareal (100% beboeren) 252 m².
-  Fælles adgangsareal (50/50% beboeren og service) 99,2 r
-  Serviceareal (100% service) 137 m².

-  Brand Central / Display
-  Brandslange
-  Brandtøppe
-  Branddør



Viborg Kommune

Ejendomme og Energi
Prinsens Alle 5, 8800 Viborg

| ejendomme@viborg.dk
| Tlf.: 87 87 87 87

Sted	: Guldblommevej 1, 8800 Viborg		
Sag	: Udlejningsboliger Viborg Kommune	Jr. nr.:	
Emne	: Fordelingsplan	Tegn. nr.:	
Sign: H09	Målt: 1:200	Dato: 26.03.2018	Rev: